

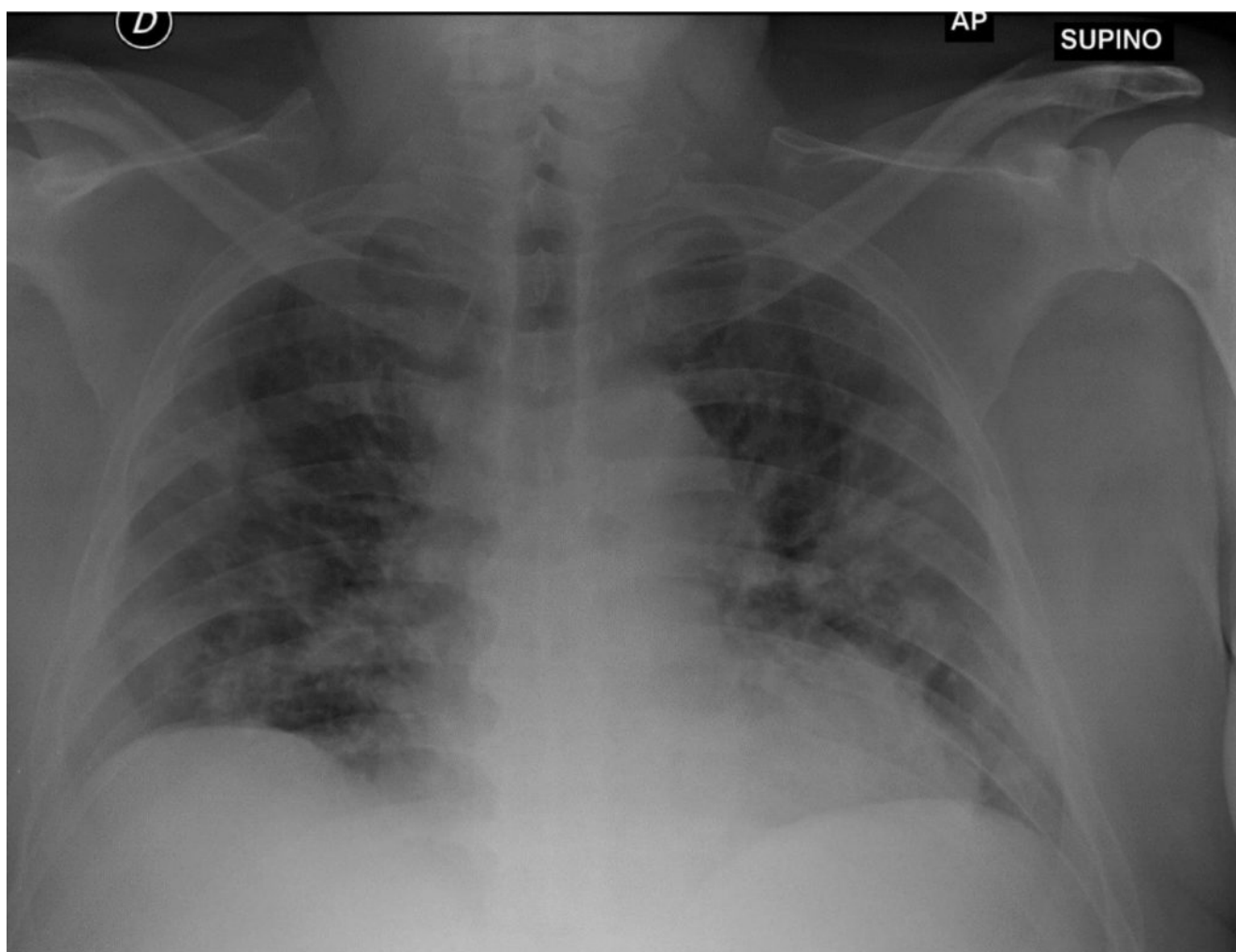
COVID-19: caso 31

R. Bonacini, G. Besutti, P. Pattacini

Radiologia IRCCS Reggio Emilia; Direttore Pierpaolo Pattacini

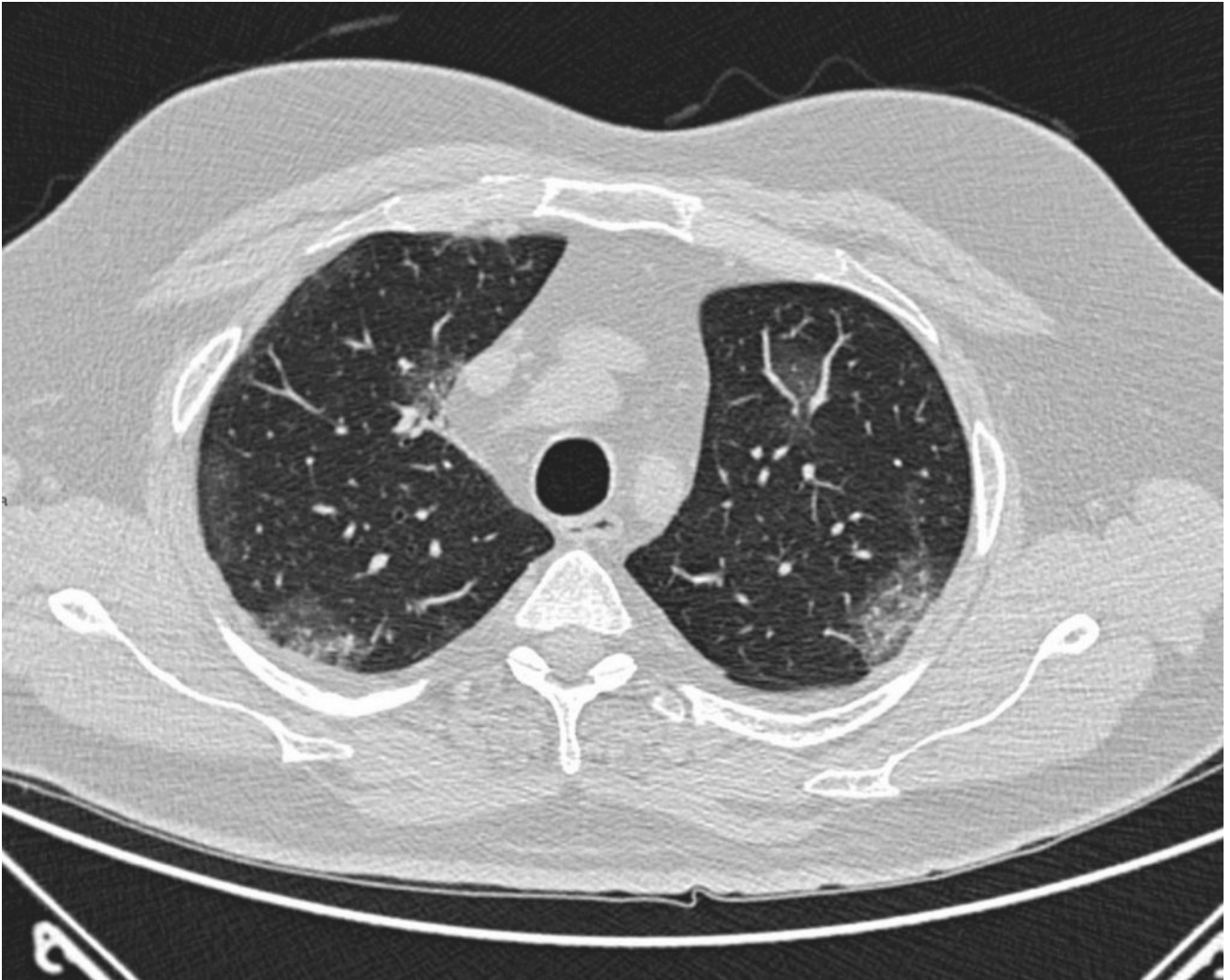
Uomo 63 anni con apnee notturne in CPAP domiciliare. Da 5 giorni febbre, astenia, faringodinia ed alvo diarroico. PCR elevata (16,27 mg/dL), ematocrito e procalcitonina nella norma.

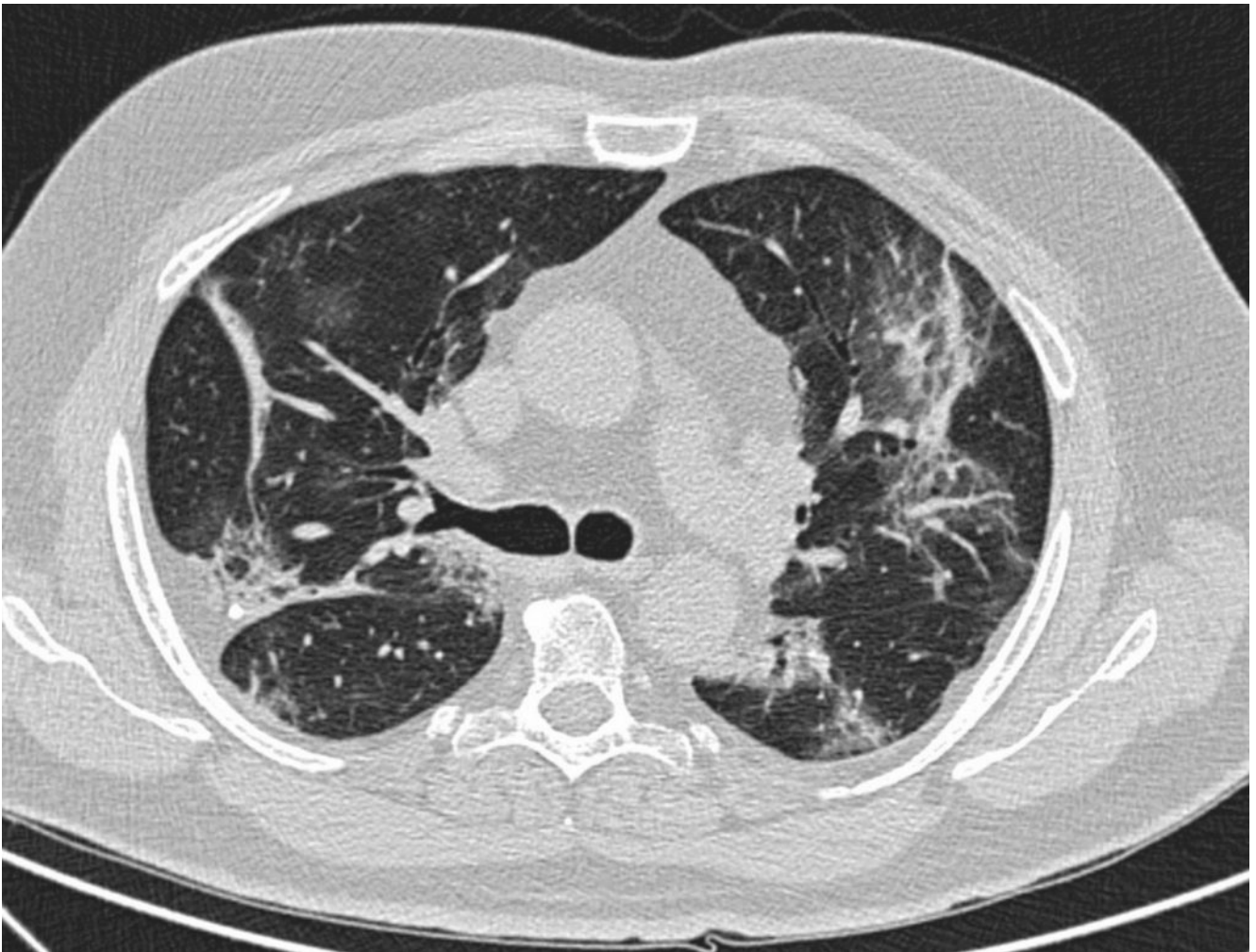
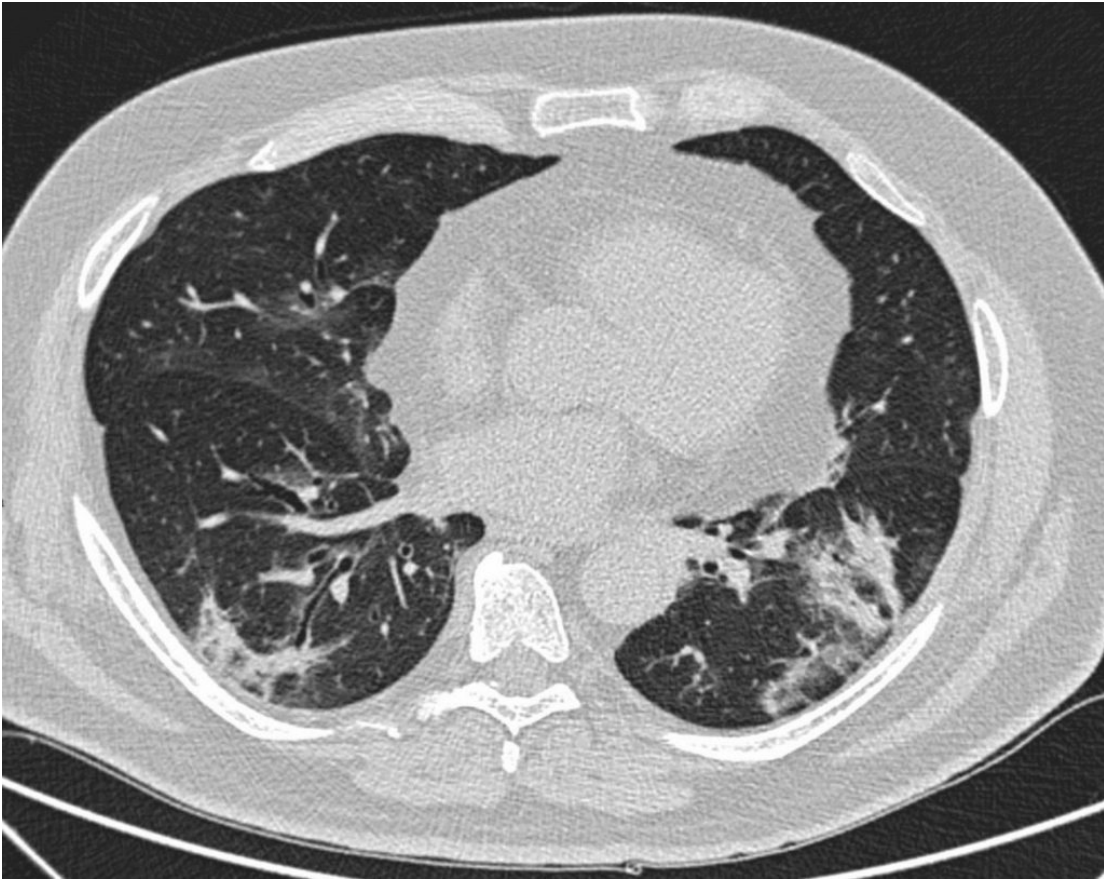
RX torace

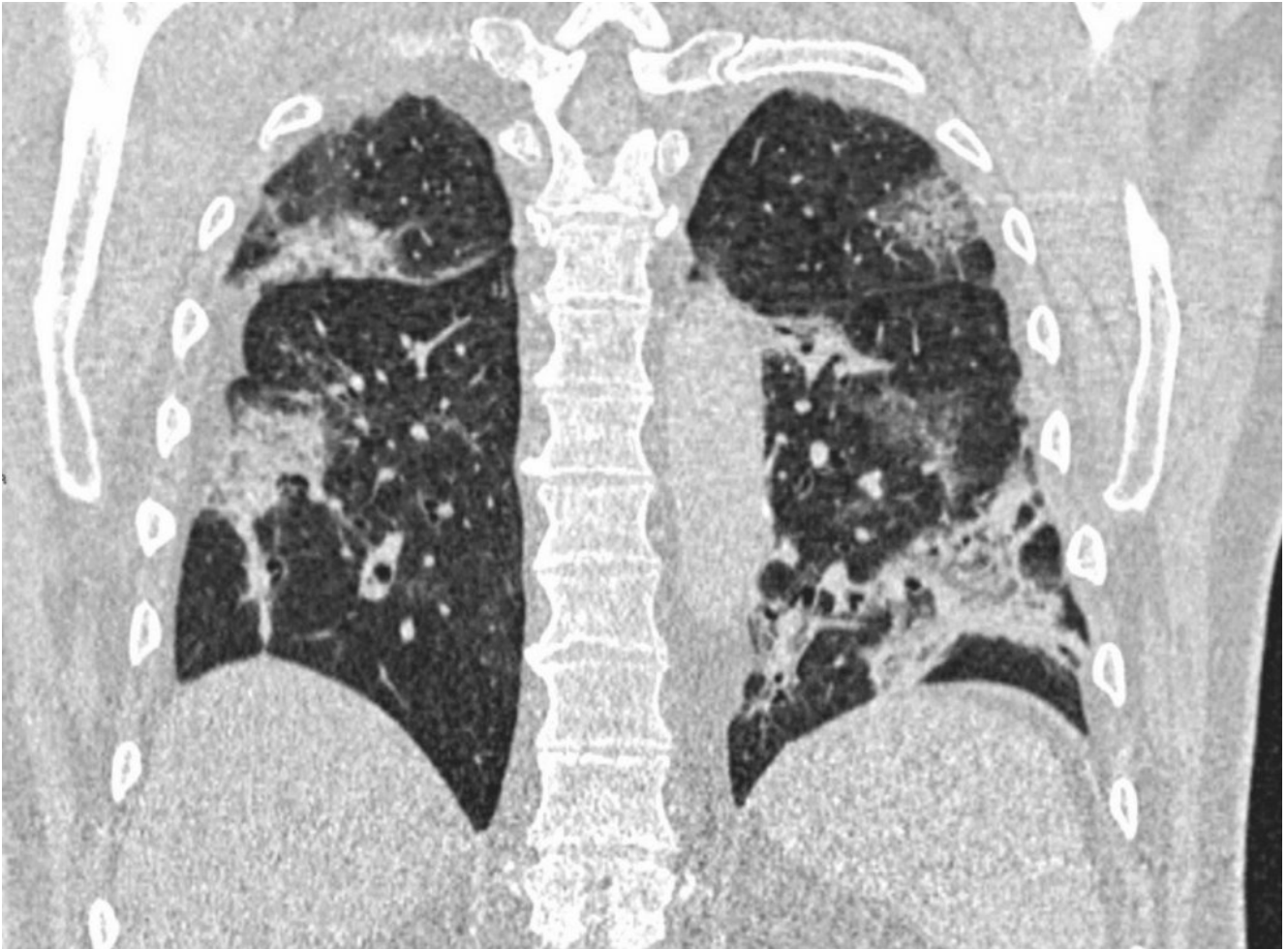


Estesi e multipli addensamenti parenchimali bilaterali.

TC torace







Multiple aree a “vetro smerigliato” e consolidamenti parenchimali bilateralmente.

Il contestuale tampone faringeo per COVID-19 è risultato positivo.